

# Safe-ari<sup>TM</sup>

... Leadership Lessons



**Welcome**

In 1997,

Janine Benyus introduced us to “biomimicry;”  
looking to nature to solve engineering  
problems.

Sociobiology is the study of animal’s behavior.

“Sociobiomimicry,”

Learn leadership from the animals...

# Our Objective



Find our voice





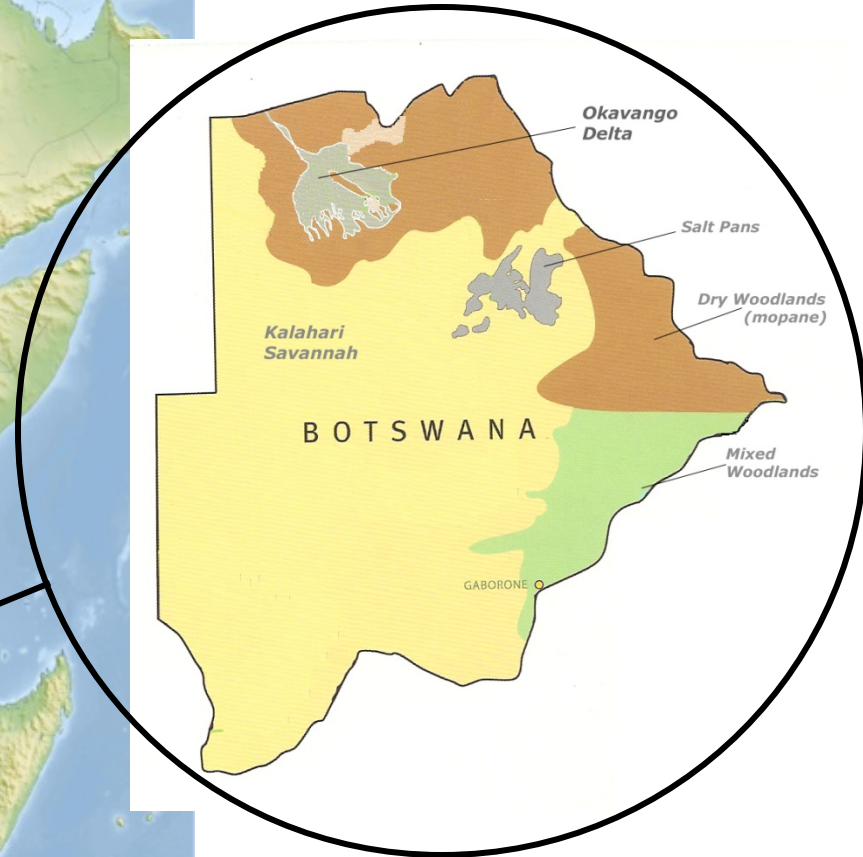


© BJ Diamond 2013





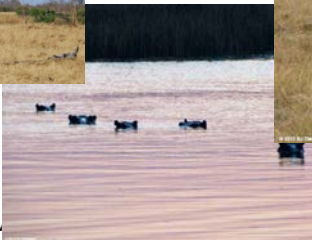
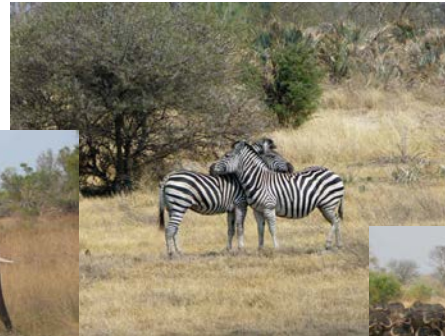
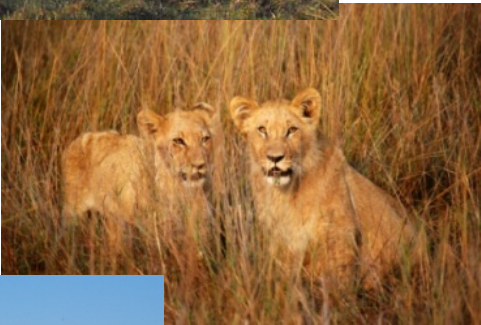
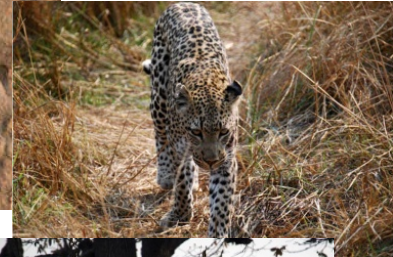




Where is your leadership required?



# Safe-ari<sup>tm</sup> by MyValueTree<sup>TM</sup>







- Someone has to take the long view
- Someone has to climb up the tree
- Someone has to put themselves on the line
- They have a voice that others listen for and follow
- They have a keen sense of risk
- They are vigilant
- They have a non-compromising sense of purpose
- There is only one in the tree
- Watching out for the well-being of the troop below







© BJ Diamond 2013



Sometimes, due to complexity or sheer size...

- Leadership in protecting the herd is shared with a council
- Alignment of purpose and shared responsibility
- Importance of team with unified vision
- Focused on task





Safe-ari™

“Standing United”



© BJ Diamond 2013



## From the Cape Buffalo we learn:

- Sometimes the one leading makes a “bad call” and others get hurt
- Leaders model the way and then give others the room to get involved
- Only a few have the courage to be out front and confront the opposition
- Leaders are willing to do the “heavy lifting.”
- Clearly representing the values of the group
- Leaders need the support of the group to stay in the battle
- Stand with me; when I am alone, out front, let me turn around and know you are with me; you stand with me.
- Leaders make sure we protect the vulnerable in our group



# Safe-ari™



© BJ Diamond 2013



Safe-ari™

“I’ve got your back”



© BJ Diamond 2013

- You can never let your guard down
- Having someone watch your flanks is essential.
- Reciprocity is important
- “Having my back” is a defining quality of the relationship
  - Implies caring
  - Implies you are more than a “means” to my “end”
- What does it mean when the person you choose to follow “has your back”?



Safe-ari™

“Have a Plan”



© BJ Diamond 2013



Safe-ari™

“Have a Plan”



© BJ Diamond 2013



Safe-ari™

“Have a Plan”



- Someone is always prowling to disrupt my calm; to find the weakness and attack.
- The leader understands risk; the hazard, its severity and how to control exposure to it.
- Know your capabilities
- Design, practice and follow a strategy.









© BJ Diamond 2013



- The leader has enough seasoning to be situationally aware.
- The leader knows how to read the tracks of hazards.
- The leader gives direction based on their interpretation of the facts and their tolerance to risk.
- Always remembering the zebras...I've got your back and I will not put you in harms way, unless we are the cape buffalo today!



- Someone has to take the long view
- Leaders model the way and then give others the room to get involved
- I've got your back
- Define, practice and follow a strategy.
- The leader knows how to read the tracks of hazards.